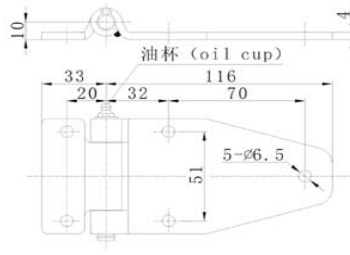
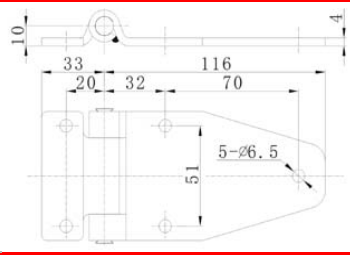


Side Door Hinges



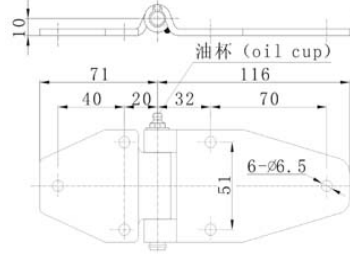
Part No. 043001/043001-In
 Material: Steel/Stainless Steel
 Weight: 0.326KG/0.316KG
 Surface treatment: Zinc Plated/Polished
 For use with the oil cup, 180° opening

Side Door Hinges



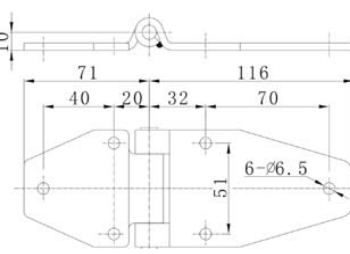
Part No. 043002/043002-In
 Material: Steel/Stainless steel
 Weight: 0.326KG/0.316KG
 Surface treatment: ZincPlated/Polished
 For use with the pin, 180° opening

Side Door Hinges



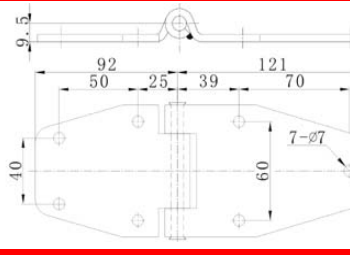
Part No. 043003/043003-In
 Material: Steel/Stainless steel
 Weight: 0.336KG/0.366KG
 Surface treatment: ZincPlated/Polished
 For use with the oil cup, 180° opening

Side Door Hinges



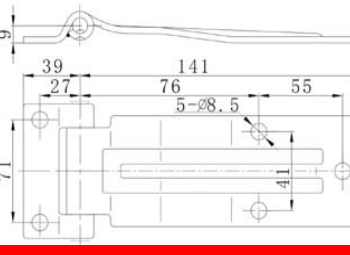
Part No. 043004/043004-In
 Material: Steel/Stainless steel
 Weight: 0.336KG/0.366KG
 Surface treatment: ZincPlated/Polished
 For use with the pin, 180° opening

Side Door Hinges



Part No. 043005/043005-In
 Material: Steel/Stainless steel
 Weight: 0.504KG/0.514KG
 Surface treatment: Zinc Plated/Polished
 For use with the pin, 180° opening

Side Door Hinges



Part No. 043006/043006-In
 Material: Steel/Stainless steel
 Weight: 0.416KG/0.4KG
 Surface treatment: ZincPlated/Polished
 For use with the pin, 180° opening

TEL: +86 21 56685622

FAX: +86 21 66519637

E-mail: truckbodyfittings@gmail.com

WEB: www.truckbodyfittings.com