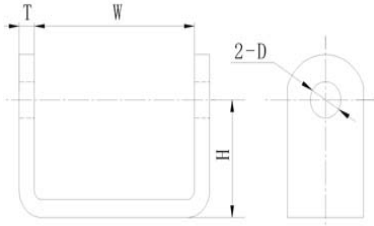


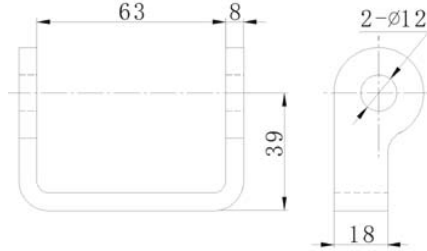


Rear Door Hinge Bracket



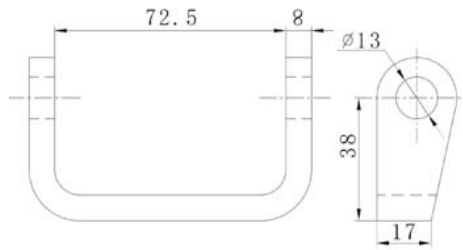
Part No	T	W	H	D	Weight
041101/041101-In	8	63	39	12	0.36/0.384
041102	8	72.5	38	13	0.38
041103/041103-In	6	63	39	12	0.29/0.308
041104/041104-In	5	56	36	8	0.152/0.16
041105	8	63	38	12	0.38
041106	6	56	32	8	0.132

Rear Door Hinge Bracket



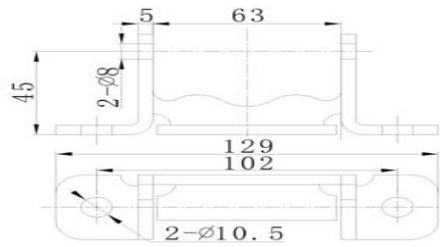
Part No: 041121/041121-In
 Material: Steel/Stainless steel
 Weight: 0.288KG/0.282KG
 Surface treatment: Zinc Plated/Polished
 the bottom size is 18mm
 270° opening

Rear Door Hinge Bracket



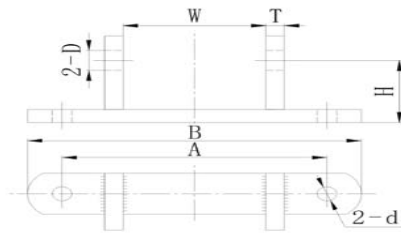
Part No: 041122/041122-In
 Material: Steel/Stainless steel
 Weight: 0.168KG/0.16KG
 Surface treatment: Zinc Plated/Polished
 the bottom size is 17mm
 270° opening

Rear Door Hinge Bracket



Part No: 041123/041123-In
 Material: Steel/Stainless steel
 Weight: 0.224KG/0.24KG
 Surface treatment: Zinc Plated/Polished
 For use with 041013 rear door hinge
 180° opening

Rear Door Hinge Bracket



Material: Steel/Stainless steel
 Surface treatment: Zinc Plated/Polished
 Welding on both sides
 270° opening

Part No	041111/041111-In	041112/041112-In	041113	041114	041115-In
H	39	36	38	38	36
W	63	56	75	63	70
D	12	8	12	12	12
A	115	100	120	115	115
B	145	125	152.5	145	145
d	10.5	8.5	8.5	10.5	10.5
t	8	6	6	8	8
Weight	0.398KG/0.436KG	0.236KG/0.22KG	0.37kg	0.39KG	0.365kg

TEL: +86 21 56685622

FAX: +86 21 66519637

E-mail: truckbodyfittings@gmail.com

WEB: www.truckbodyfittings.com