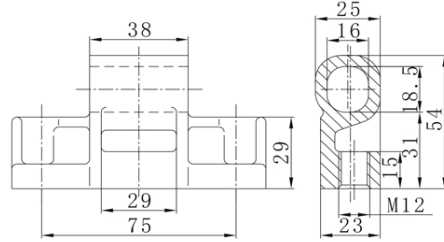


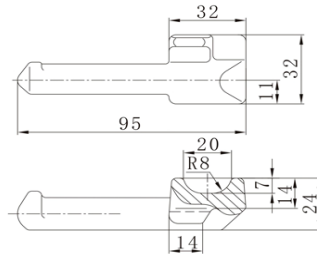


Pin Hinge



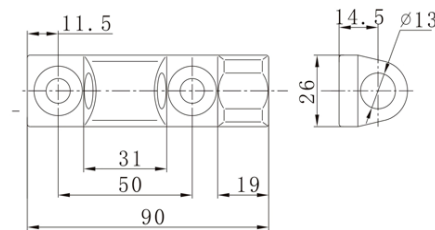
Part No:	045071
Material:	Steel
Weight:	0.382KG
Surface treatment:	Zinc Plated

Pin Hinge



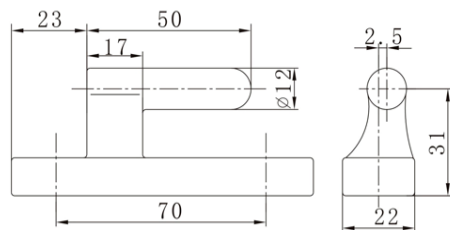
Part No:	045072
Material:	Steel
Weight:	0.196KG
Surface treatment:	Oillness

Pin Hinge



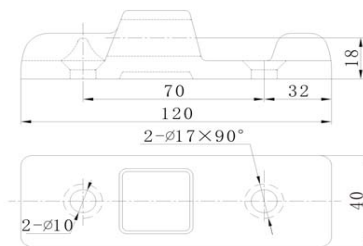
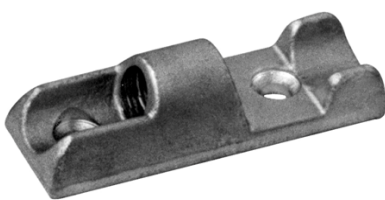
Part No:	045081
Material:	Steel
Weight:	0.164KG
Surface treatment:	Zinc Plated

Pin Hinge



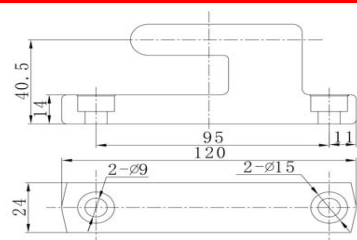
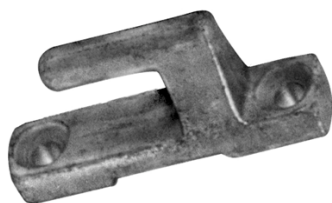
Part No:	045082
Material:	Steel
Weight:	0.216KG
Surface treatment:	Zinc Plated

Pin Hinge



Part No:	045091
Material:	Steel
Weight:	0.42KG
Surface treatment:	Zinc Plated
Manufacture Technics:	Forging

Pin Hinge



Part No:	045092
Material:	Steel
Weight:	0.424KG
Surface treatment:	Zinc Plated
Manufacture Technics:	Forging