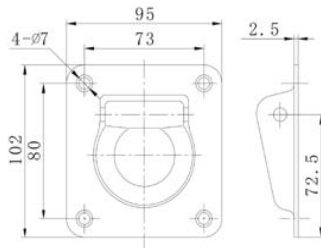


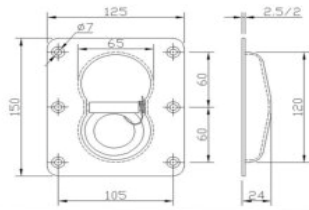


Lashing Ring Series



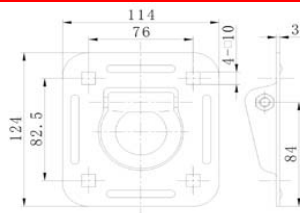
Part No.	026504/026504-In
Material:	Steel/Stainless Steel
Weight:	0.386KG/0.386KG
Surface treatment:	Zinc Plated/Polished

Lashing Ring Series



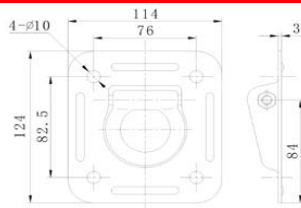
Part No.	026505/026505-In
Material:	Steel/Stainless Steel
Weight:	0.596KG/0.596KG
Surface treatment:	Zinc Plated/Polished

Lashing Ring Series



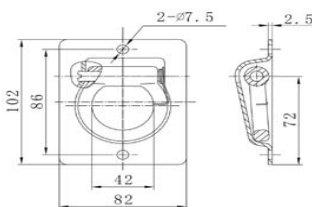
Part No.	026006
Material:	Steel
Weight:	0.5166KG
Surface treatment:	Zinc Plated

Lashing Ring Series



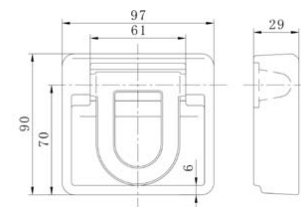
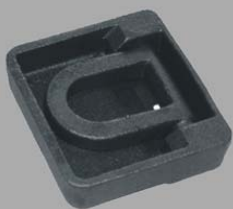
Part No.	026007
Material:	Steel
Weight:	0.526KG
Surface treatment:	Zinc Plated

Lashing Ring Series



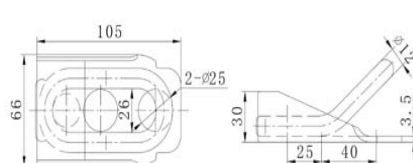
Part No.	026008
Material:	Steel
Weight:	0.34KG
Surface treatment:	Zinc Plated

Lashing Ring Series



Part No.	026009
Material:	Steel
Weight:	0.954KG
Surface treatment:	Raw

Lashing Ring Series



Part No.	026011
Material:	Steel
Weight:	0.954KG
Surface treatment:	Painting

TEL: +86 21 56685622 FAX: +86 21 66519637

E-mail: [truckbodyfittings@gmail.com](mailto:truckbodyfittings@gmail.com)

WEB: [www.truckbodyfittings.com](http://www.truckbodyfittings.com)