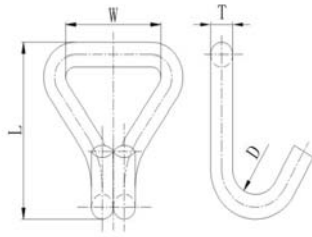
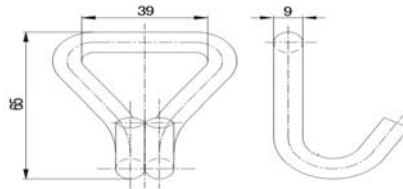


Hook



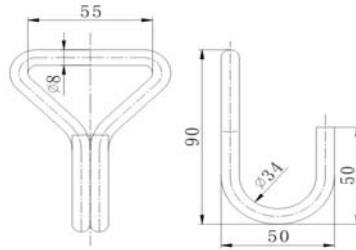
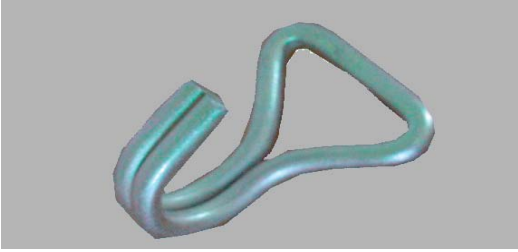
Item No	023001	023002	023003	023004	023005	023006	023008
W	52	52	38	50	25	27	52
L	86	90	90	86	58	54	94
D	20	22	22	36	25	12	13
T	12	8	9.5	10	7	6	12.5
Weight	0.268	0.128	0.16	0.2	0.065	0.042	0.334

Hook



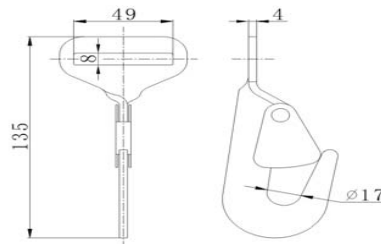
Part No:	023007
Material:	Steel
Weight:	0.15KG
Surface treatment:	Yellow zinc plated
Breaking Load:	3000KG

Hook



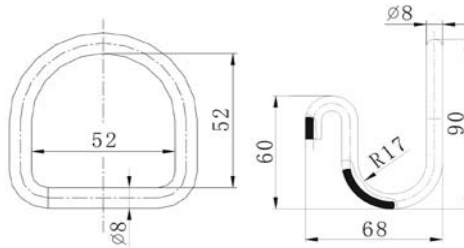
Part No:	023009
Material:	Steel
Weight:	0.158KG
Surface treatment:	Yellow zinc plated
Breaking Load:	1500KG

Hook



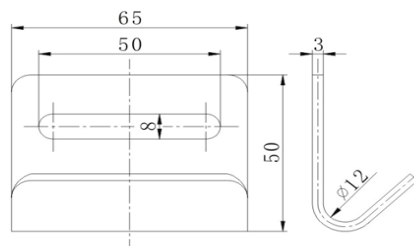
Part No:	023011
Material:	Steel
Weight:	0.15KG
Surface treatment:	Yellow zinc plated
Breaking Load:	2000KG

Hook



Part No:	023020
Material:	Steel
Weight:	0.096KG&0.176KG
Surface treatment:	Yellow zinc plated

Hook



Part No:	023031/023031-In
Material:	Steel/Stainless steel
Weight:	0.13KG/0.102KG
Surface treatment:	Zinc plated/Polished
Breaking Load:	1500KG