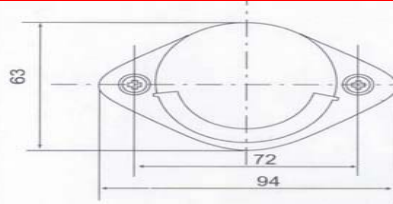
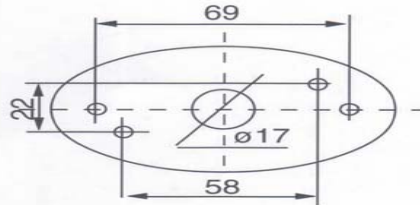


License Plate Lamp



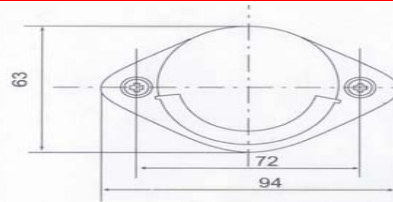
Part No.:	090101
Material:	Plastic
Bulb Mode:	R10W (24V10W)
Application:	Using the license plate for lighting devices.

License Plate Lamp



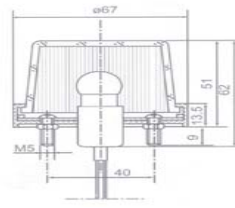
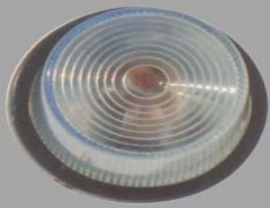
Part No.:	090102
Material:	Steel
Bulb Mode:	R10W (24V10W)
Application:	Using the license plate for lighting devices.

License Plate Lamp



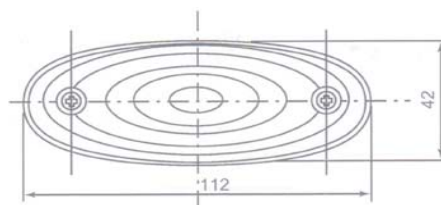
Part No.:	090104
Material:	Plastic
Bulb Mode:	LED
Application:	Using the license plate for lighting devices.

Front Rear Outline Marker Lamp/Front Position Lamp



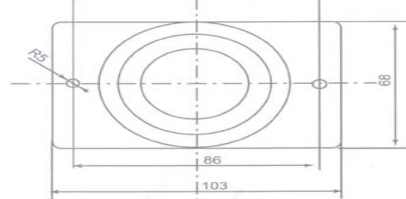
Part No.:	090301
Material:	Plastic
Bulb Mode:	R10W (24V10W)
Application:	Fixed on the vehicle near the outer and most likely near the top, to show that the height and width of lamps.

Front Rear Outline Marker Lamp/Front Position Lamp



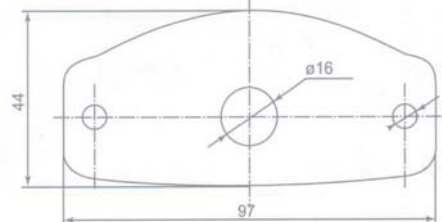
Part No.:	090401
Material:	Plastic
Bulb Mode:	R10W (24V10W)
Application:	Fixed on the vehicle near the outer and most likely near the top, to show that the height and width of lamps.

Front Rear Outline Marker Lamp/Front Position Lamp



Part No.:	090501
Material:	Plastic
Bulb Mode:	R10W (24V10W)
Application:	Fixed on the vehicle near the outer and most likely near the top, to show that the height and width of lamps.

Front Rear Outline Marker Lamp/Front Position Lamp



Part No.:	090502
Material:	Plastic
Bulb Mode:	W5W (24V5W)
Application:	Fixed on the vehicle near the outer and most likely near the top, to show that the height and width of lamps.

TEL:+86 21 56685622

FAX:+86 21 66519637

E-mail:truckbodyfittings@gmail.com

WEB:www.truckbodyfittings.com