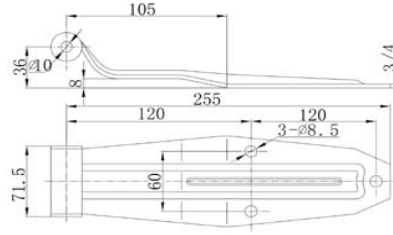


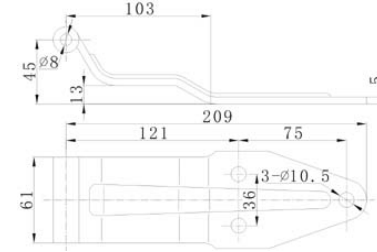


Rear Door Hinges



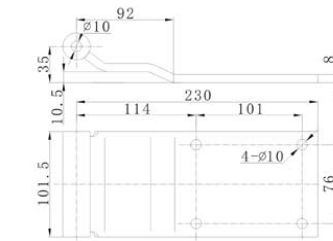
Part No. 041012-1/041012-1-In
 Material: Steel/Stainless steel
 Weight: 0.992KG/0.785KG
 Surface treatment: Zinc Plated/Polished
 For use with the bracket. See section Two, item 2. 270° opening

Rear Door Hinges



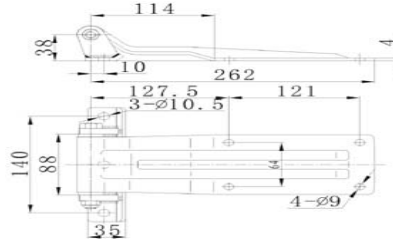
Part No. 041013
 Material: Steel
 Weight: 0.504KG
 Surface treatment: Zinc Plated
 For use with the bracket. See section Two, item 2. 180° opening

Rear Door Hinges



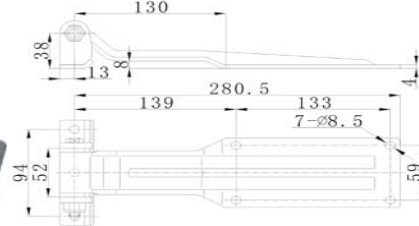
Part No. 041014
 Material: Steel
 Weight: 2.06KG
 Surface treatment: Zinc Plated
 For use with the bracket 270° opening

Rear Door Hinges



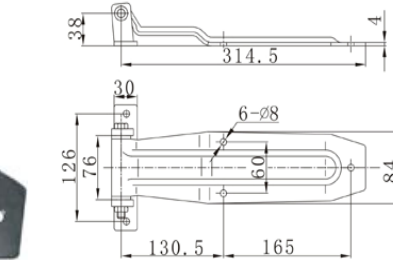
Part No. 41015
 Material: Steel
 Weight: 1.37KG
 Surface treatment: Zinc Plated
 For use with the bracket 270° opening

Rear Door Hinges



Part No. 041016/041016-In
 Material: Steel/Stainless steel
 Weight: 0.98KG/0.88KG
 Surface treatment: Zinc Plated/Polished
 For use with the bracket 270° opening

Rear Door Hinges



Part No. 041017
 Material: Stainless Steel
 Weight: 1.244KG
 Surface treatment: Polished
 For use with the bracket 270° opening