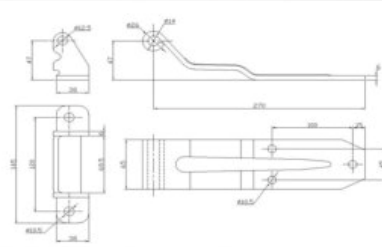


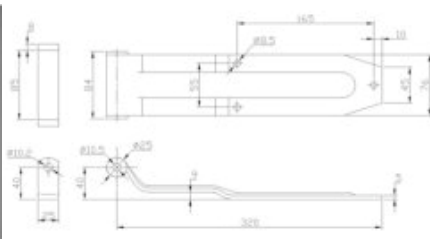


## Rear Door Hinges



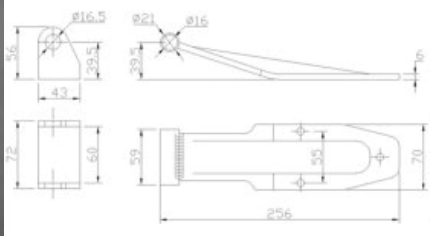
Part No.	041031
Material:	Steel
Weight:	1.4KG
Surface treatment:	Zinc Plated
For use with the bracket 180° opening	

## Rear Door Hinges



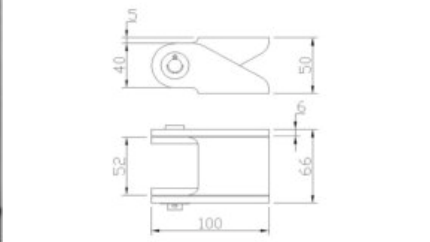
Part No.	041032/041032-In
Material:	Steel/Stainless steel
Weight:	1.51KG/1.43KG
Surface treatment:	Zinc Plated/Polished
For use with the bracket 270° opening	

## Rear Door Hinges



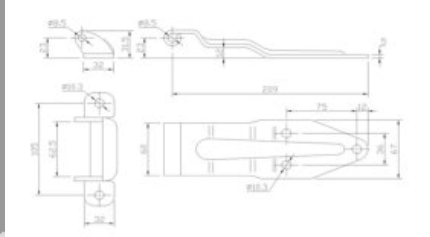
Part No.	041033
Material:	Steel
Weight:	1.16KG
Surface treatment:	Zinc Plated
For use with the bracket 270° opening	

## Rear Door Hinges



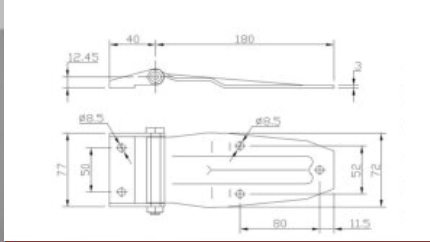
Part No.	041034
Material:	Steel
Weight:	0.84KG
Surface treatment:	Zinc Plated
For use with the bracket 270° opening	

## Rear Door Hinges



Part No.	041035
Material:	Steel
Weight:	0.75KG
Surface treatment:	Zinc Plated
For use with the bracket 270° opening	

## Rear Door Hinges



Part No.	041036
Material:	Steel
Weight:	0.54KG
Surface treatment:	Zinc Plated
For use with the bracket 180° opening	

TEL: +86 21 56685622      FAX: +86 21 66519637  
 E-mail: truckbodyfittings@gmail.com  
 WEB: www.truckbodyfittings.com