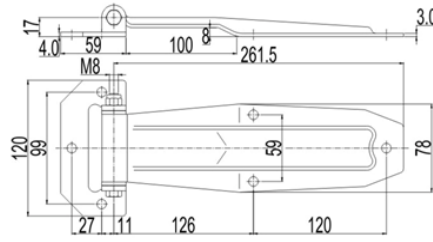


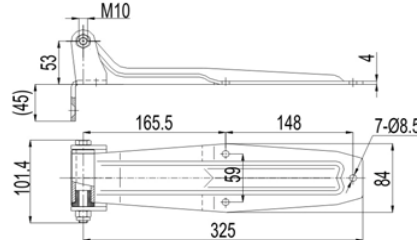


Rear Door Hinges



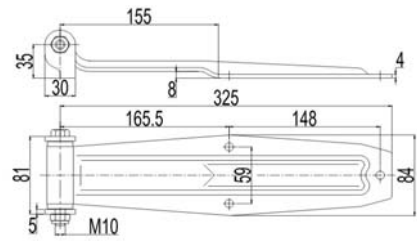
Part No. 041037/043037-In
 Material: Steel/Stainless steel
 Weight: 0.737KG/0.734KG
 Surface treatment: Zinc Plated/Polished
 For use with the bracket
 180° opening

Rear Door Hinges



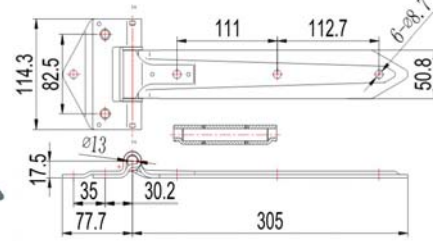
Part No. 041038/041038-In
 Material: Steel/Stainless steel
 Weight: 1.262KG/1.21KG
 Surface treatment: Zinc Plated/Polished
 For use with the bracket
 270° opening

Rear Door Hinges



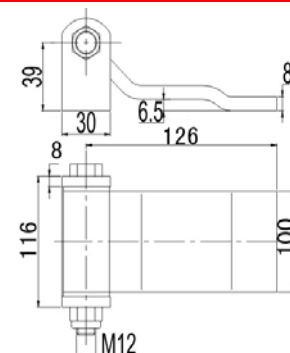
Part No. 041039/041039-In
 Material: Steel/Stainless steel
 Weight: 1.16KG/1.13KG
 Surface treatment: Zinc Plated/Polished
 For use with the bracket
 270° opening

Rear Door Hinges



Part No. 041040/041040-In
 Material: Steel/Stainless steel
 Weight: 0.96KG/0.84KG
 Surface treatment: Zinc Plated/Polished
 For use with the bracket
 180° opening

Rear Door Hinges



Part No. 041041
 Material: Steel
 Weight: 0.85KG
 Surface treatment: Zinc Plated
 For use with the bracket
 270° opening